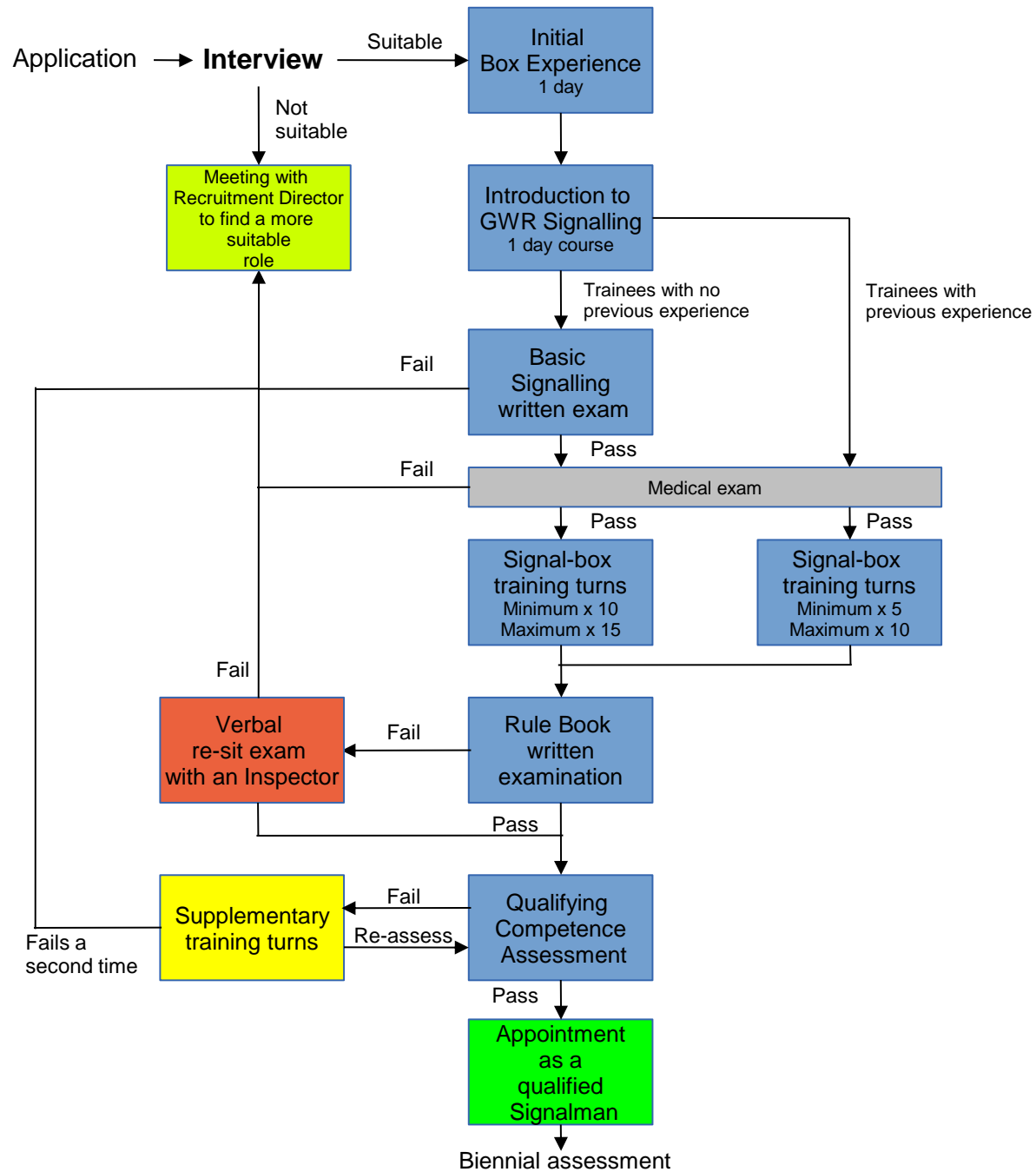




# Signalling training – qualifying as a Signaller



Accompanying an experienced signaller for the day

A short test on what you have learnt to date  
c.30 min duration

At a nominated training signal-box (includes Rule Book learning)

1.5-2 hours duration

A practical assessment of a 'solo-turn' with an Inspector at your training signal-box

*You join the roster for your qualifying signal-box*